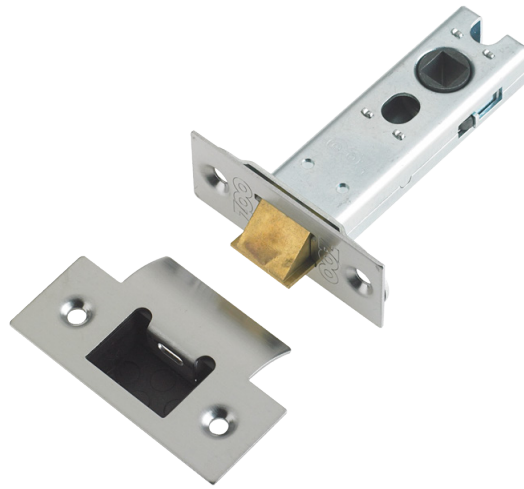


TECHNICAL SPECIFICATION SHEET

ZTLKA64 / 76 / 102 / 127 / 152



CODE	FINISH
ZTLKA64SS	STAINLESS STEEL
ZTLKA76SS	STAINLESS STEEL
ZTLKA102SS	STAINLESS STEEL
ZTLKA127SS	STAINLESS STEEL
ZTLKA152SS	STAINLESS STEEL

PRODUCT SPECIFICATIONS

- 40 x 65mm Forend
- 15 x 22 x 64/76/102/127/152mm Body
- 45 Degree Short Travel
- Guided Latch Bolt
- Heavy Duty Dual Sprung
- Includes Strike Plates And Dust Box
- 10 Year Mechanical Guarantee

STANDARDS



SUITABILITY



CODE	DESCRIPTION	FINISHES	ADDITIONAL INFO.
ZTLKA64SS	Tubular Bolt Through Latch	SS	44.5mm Backset
ZTLKA76SS	Tubular Bolt Through Latch	SS	57mm Backset
ZTLKA102SS	Tubular Bolt Through Latch	SS	82mm Backset
ZTLKA127SS	Tubular Bolt Through Latch	SS	108mm Backset
ZTLKA152SS	Tubular Bolt Through Latch	SS	127mm Backset



For more information please contact us today:

Call: 01228 672900

Fax: 01228 672928

Email: sales@zoo-hardware.co.uk

Web: www.zoohardware.co.uk

ZOO Hardware Ltd, Unit B, Dukes Drive
Kingmoor Park North, Carlisle, Cumbria CA6 4SH



URS is a member of Registrar of Standards (Holdings) Ltd.