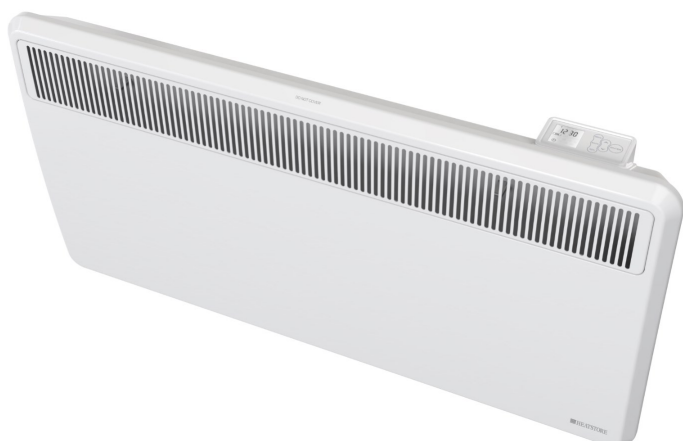


HSDP Panel Heater



Product Description

Heatstore HSDP features digital user controls, allowing the programming of multiple 7-day timer profiles via an icon-based display and capacitive buttons.



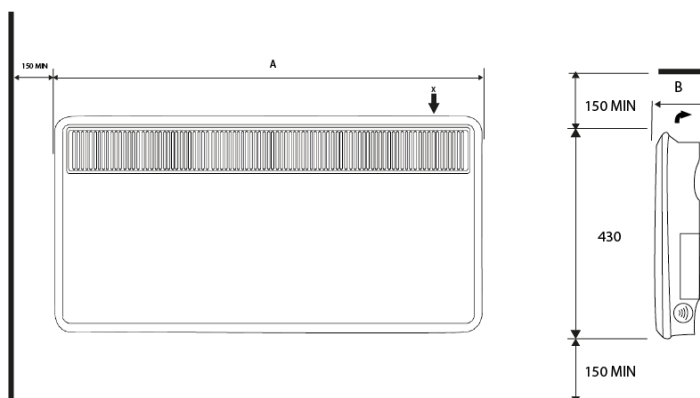
Key Features

- Intuitive user controls with icon-based display
- User programmable room temperatures with multiple seven-day timer profiles
- Electronic thermostat accurate to within 0.2°C
- Energy-saving technologies such as Adaptive Start and Open Window Detection
- Slimline design that covers traditional panel heater fixing marks
- Forward facing slotted grille
- Splash-proof for use in bathrooms
- Complies with Lot 20 of ERP Directive

Technical Details

Controls	Digitally controlled, Electronic Thermostat accurate to ($\pm 0.2^{\circ}\text{C}$) Timer modes: 7 Day Programmable User Timer Continuous heat modes: Manual, Frost Protect, Off
Controller UI	<ul style="list-style-type: none"> • Icon-based display with white backlight • Capacitive buttons with audio feedback • User replaceable battery (Coin-Type)
Controller Functions	<ul style="list-style-type: none"> • Open window detection, Adaptive-start, Advance time period • Adjustable max SP range ($7-32^{\circ}\text{C}$) • Bluetooth for software updates and control • Child Lock
Construction	<ul style="list-style-type: none"> • Durable epoxy-polyester powder coated steel casing with louvered forward facing grille • Advanced controls with cap-sense technology for total flexibility of heating
Element	Compact, finned, mineral filled sheathed element
Installation	1 H-frame wall bracket for easy fixing
Safety	<ul style="list-style-type: none"> • Thermal cut-out. Auto reset type • Overheat detection
IP Rating	IP24
Battery Backup	3.3V coin cell battery to backup real time clock. Battery life > 5 years.
Supply	1.3 metres fitted, 3 core for fused spur installation, 1/N/PE ~230-240 V, 50Hz Class I, with earth wire
Colour / Finish	Metal Chassis, Air Outlet Grille & Control Moulding - Traffic White (RAL 9016)

Dimensions



Model/Item No. (EAN-Code 50206695+Item No.)	17966	HSDP500 17973	HSDP750 17980	HSDP1000 17997	HSDP1500 18000	HSDP2000 18017	HSDP3000
Output (kW)	0.50	0.75	1.00	1.50	2.00	3.00	
Height (mm)	430	430	430	430	430	430	
Width A (mm)	450	620	620	690	860	860	
Depth B (mm)	108	108	108	108	108	143	
Weight (KG)	4.6	5.9	5.9	6.1	7.8	8.7	
Packaging Details							
Height (mm)	470	470	470	470	470	470	
Width (mm)	490	660	660	720	890	890	
Depth (mm)	135	135	135	135	135	160	
Packed Weight (KG)	5.1	6.5	6.5	6.7	8.4	9.8	
Ti	17	12	12	10	9	7	
Hi	4	4	4	4	4	4	
Pallet Quantity (2.4m high)	68	48	48	40	36	28	

Warranty & Approvals

Approvals	CE, BEAB
Warranty	2 year
Country of Origin	United Kingdom
Manufacturer	Heatstore